



SK SERIES

PROTEIN SKIMMER



Owner's Manual

Bedienungsanleitung

Mode d'emploi

Manual de Usuario

Manual do Proprietário

Instrukcja Obsługi

Manuale del proprietario

使用说明书

使用説明書

Dear Customer,

Thank you for purchasing this product.

For optimum performance and safety, please read these instructions carefully.

EN

User Memo:

Date of purchase:	_____
Dealer name:	_____
Dealer address:	_____ _____
Dealer website:	_____
Dealer email:	_____
Dealer phone no.:	_____

Please visit us on facebook or twitter!



www.facebook.com/Maxspect



twitter.com/maxspectled

Package and Assembly

Please check the content in the package.

EN



x1



x1



x1

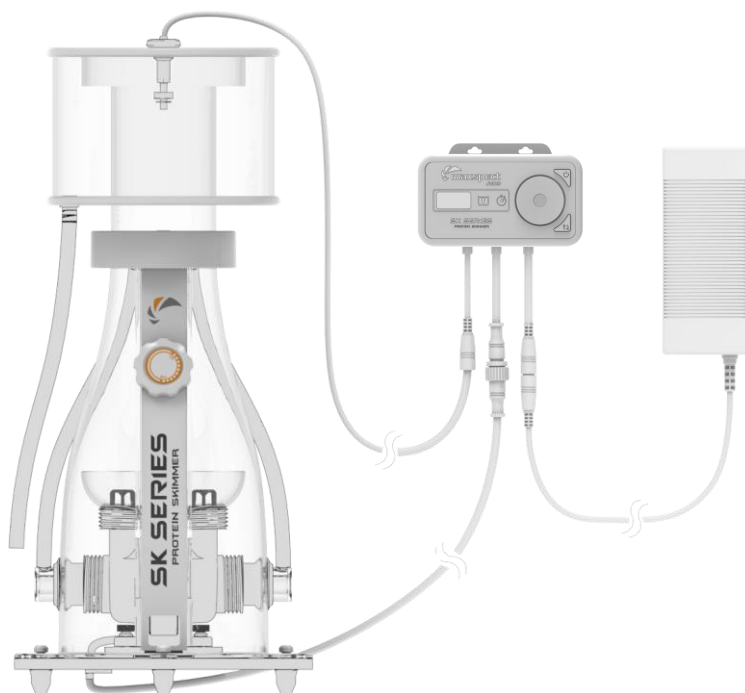


x1



x1

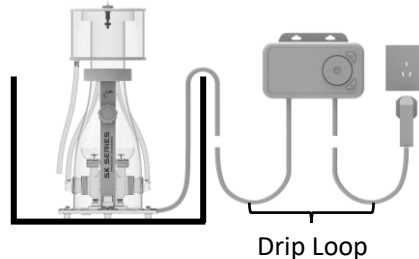
Remove all packing materials before assembling.



Before using this **Maxspect™ Jump Series Protein Skimmer** please read these operating instructions carefully. Take special care to follow the safety suggestions listed below. Afterwards keep this manual handy for future reference.

READ AND FOLLOW ALL SAFETY INSTRUCTIONS

1. **DANGER** – To avoid possible electric shock, special care should be taken since water is employed in the use of aquarium equipment. For each of the following situations, **DO NOT** attempt to repair by yourself; return the appliance to an authorized service facility for service or discard the appliance.
 - a) If the appliance shows any sign of abnormal water leakage, immediately unplug it from the power source.
 - b) Carefully examine the appliance after installation. It should not be plugged in if there is water on parts not intended to be wet.
 - c) **DO NOT** operate any appliance if it has a damaged cord or plug, or if it is malfunctioning or has been dropped or damaged in any manner.
 - d) To avoid the possibility of the appliance plug or receptacle getting wet, position aquarium stand and tank to one side of a wall-mounted receptacle to prevent water from dripping onto the receptacle or plug. A “drip-loop” shown in the figure, should be arranged by the user for each cord connecting an aquarium appliance to a receptacle. The “drip-loop” is that part of the cord below the level of the receptacle, or the connector if an extension cord is used, to prevent water traveling along the cord and coming in contact with the receptacle. If the plug or socket does get wet, **DO NOT** unplug the cord. Disconnect the fuse or circuit breaker that supplies power to the appliance. Then unplug and examine for presence of water in the receptacle.



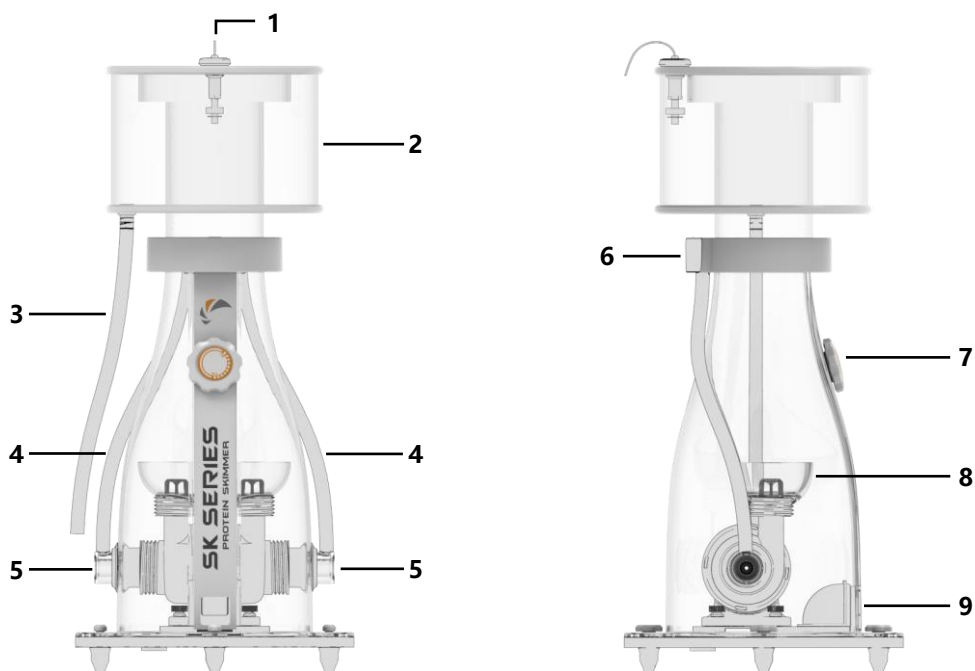
2. Close supervision is necessary when any appliance is used by or near children.
3. To avoid injury, **DO NOT** contact moving parts or hot parts such as heaters, reflectors, lamp bulbs, and the like.
4. Always unplug an appliance from an outlet when not in use, before putting on or taking off parts, and before cleaning. Never yank cord to pull plug from outlet. Grasp the plug and pull to disconnect.
5. **DO NOT** use an appliance for other than intended use. The use of attachments not recommended or sold by the appliance manufacturer may cause an unsafe condition.
6. **DO NOT** install or store the appliances where it will be exposed to the weather or to temperatures below freezing.
7. Make sure an appliance mounted on a tank is securely installed before operating it.
8. Read and observe all the important notices on the appliance.
9. If an extension cord is necessary, a cord with a proper rating should be used. A cord rated for less amperes or watts than the appliance rating may overheat.

Preview

Maxspect™ Jump Series Protein Skimmer is a very competitive product which features with some innovate functions.

EN

- **Dual Water Inlets:** Allow the skimmer sucks water from both sides of the skimmer.
- **Dual Needle Wheels:** Each water inlet features dual needle wheels. One is spinning while the other one is static. This unique design makes the bubbles generated even smaller and in higher density compare to most of the traditional skimmers which using needle wheel technology.
- **Over Flow Sensor:** An over flow sensor which can detect the water level of the collection cup and send warning signal when necessary.



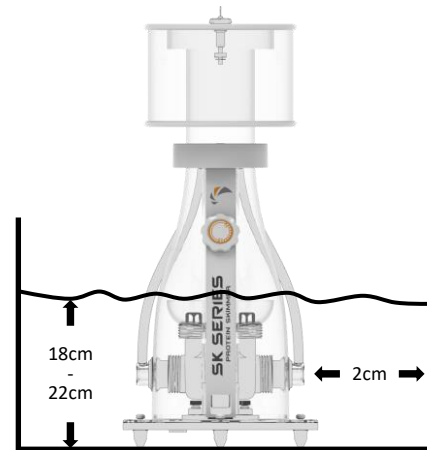
- | | | |
|---------------------|----------------------|-------------------------|
| 1. Over Flow Sensor | 4. Air Hose | 7. Water Level Adjustor |
| 2. Collection Cup | 5. Dual Water Inlets | 8. Dual Bubble Outlets |
| 3. Drain Hose | 6. Silencer | 9. Water Outlet |

Positioning and Commissioning

Positioning

To position the Jump Series Protein Skimmer in a proper place, there are some rules should be followed:

- Before putting the skimmer into the sump, it is recommended to clean it with fresh water.
- Place the skimmer in a sump compartment where the water level is in consistent height. An auto top-up system may be needed to keep the water level.
- Place the skimmer in a place where is free of debris, gravel, sand, shells and small objects.
- The optimal water level of the skimmer is in between 18-22cm/7"-8 1/2".
- Each water inlet requires at least 2cm/1" space.
- The water outlet requires at least 2cm/1" space.
- For indoor use only.



EN

Commissioning (Break-in)

After positioning the skimmer in the proper place. It is ready to put it into operation.

However, before the skimmer can perform optimally, it requires a break-in period which may last from minutes to days of time. It depends the factors like: the adhesive residues, fats or other similar impurities left in the skimmer, or chemistry, feeding and surface tension of the water etc. To tune the skimmer, you can follow below two ways.

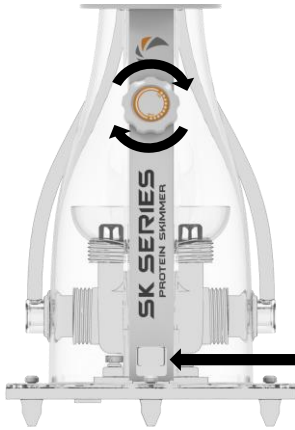
- **Controller:** You can adjust the working speed of the pump by setting parameter through the controller.
- **Water outlet:** You can control the water volume flowing out of the skimmer by turning the water level adjustor.

The response of any adjustment change is delayed in time. For detailed operation, please read "Operation" section.

You can adjust the foaming performance by following below guidelines.

EN

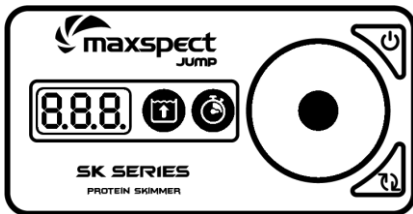
1. Water Outlet



Rotate the knob to adjust the water outlet.

2. Controller

Controller Unit Introduction



- 8.8.8. Speed/Time Indicator
- Control Dial
- Over Flow Indicator
- Feeding Indicator
- ON/OFF Button
- Feeding Button

Turn ON/OFF the Skimmer

Press the ON/OFF Button for about 5 seconds can turn on or off the skimmer. After releasing the button, the system will count down from 10 seconds before the skimmer starts to work.

Setting Working Speed

Press the Control Dial to enter speed-setting status, rotate the Control Dial to set a speed among OFF/10/20.../100. Press again the Control Dial to save the setting.

Feeding

Press the Feeding Button can enter or exit the Feed Mode, the pump will stop working for 600 seconds(unchangable) and the Feeding Indicator will be strobing during the feeding period.

Over Flow Detection

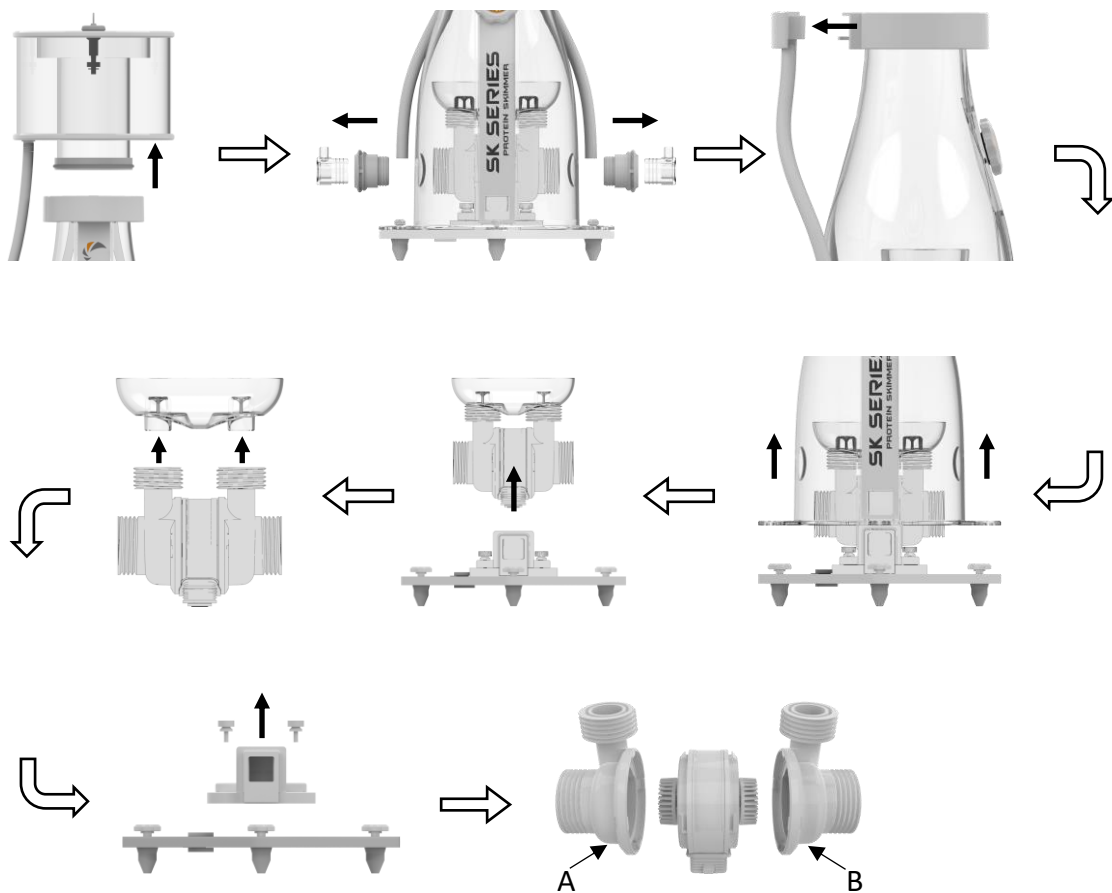
The pump will stop working immediately when the buoy of the sensor is floating on the water, and the Over Flow Indicator will be strobing. After the buoy is back to its normal position, it will take 10 seconds waiting for the pump to start working again.

Maintenance

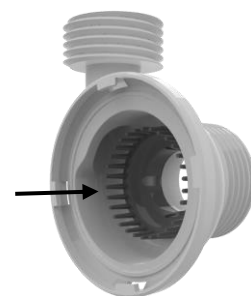
EN

Maintenance of the Appliance

The Maxspect™ Jump Series Protein Skimmer can be completely torn down for maintenance, cleaning and servicing. This is done in the order of the steps described below. Due to the harsh conditions of a saltwater aquarium and resulting buildup of algae and other organic matter, it is advisable to clean the pump to ensure the longevity of appliance. Maxspect recommends doing a cleaning every 6 months or as necessary. If there is calcium buildup, it may be necessary to soak these parts in a mild acid solution such as vinegar. DO NOT use strong acids, because these may damage the components. After cleaning, reassemble the appliance.

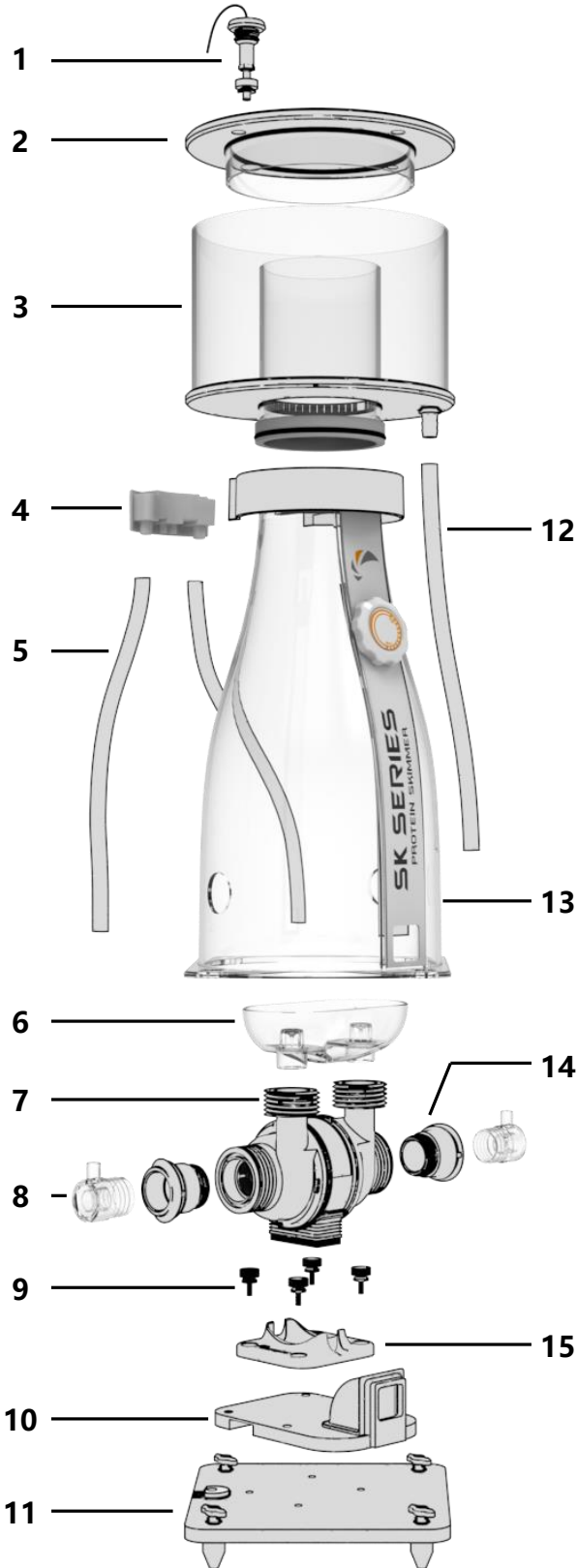


1. DO NOT disassemble the static needle wheel.
2. The housing integrated with static needle wheel must be installed on the correct side when reassemble the pump.



Skimmer

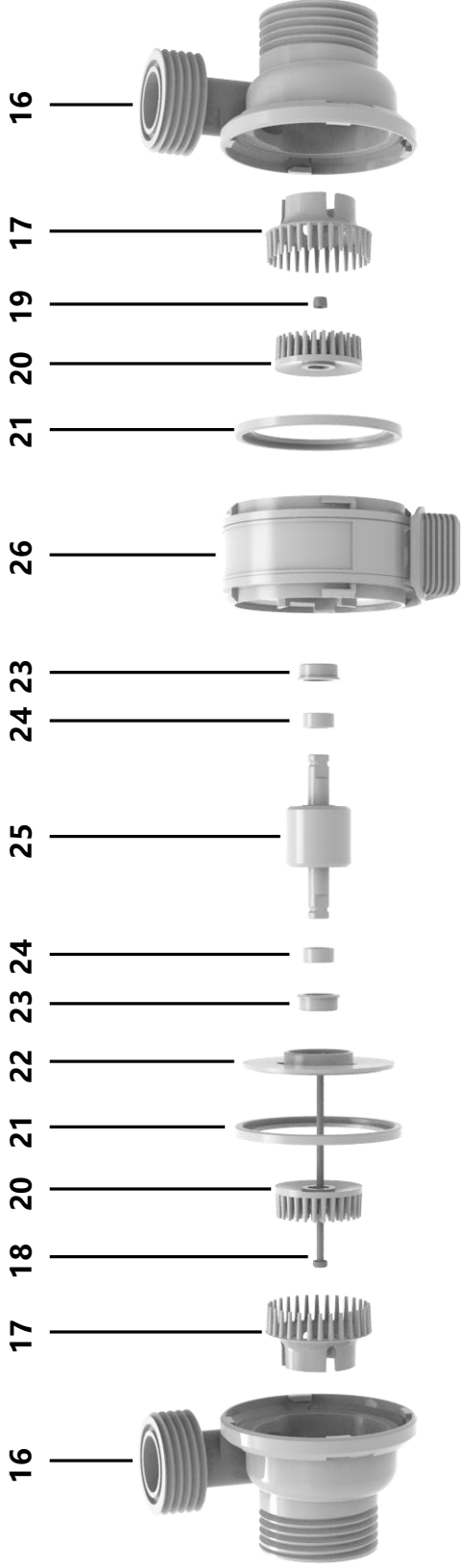
EN



No.	Name	QTY
1	Over Flow Sensor	1
2	Cup Cover	1
3	Collection Cup	1
4	Silencer	1
5	Air Hose	2
6	Bubble Cup	1
7	Pump Body	1
8	Air Intake Connector	2
9	Pump Base Screw	4
10	Water Outlet	1
11	Skimmer Base	1
12	Drain Hose	1
13	Skimmer Body	1
14	Silicone Seal	2
15	Pump Base	1

pare Parts

Pump



No.	Name	QTY	No.	Name	QTY	No.	Name	QTY
16	Needle Wheel Housing	2	20	Spinning Needle Wheel	2	24	Bearing	2
17	Static Needle Wheel(undetachable)	2	21	Silicone Seal	2	25	Rotor	1
18	Titanium Screw	1	22	Rotor Cover	1	26	Stator	1
19	Titanium nut	1	23	Silicone Pad	2			

Maxspect (HongKong) Limited warrants all **Maxspect™ Jump Series Protein Skimmer** products against defects in workmanship for a period of 12-months from the date of purchase. If a defect exists during the warranty period, Maxspect (HongKong) Limited at its option will either repair (using new or remanufactured parts) or replace (with a new or remanufactured unit) the product at no charge.

THE WARRANTY WILL NOT APPLY TO THE PRODUCT IF IT HAS BEEN DAMAGED BY MISUSE, ALTERATION, ACCIDENT, IMPROPER HANDLING OR OPERATION, OR IF UNAUTHORIZED REPAIRS ARE ATTEMPTED OR MADE. SOME EXAMPLES OF DAMAGES NOT COVERED BY WARRANTY INCLUDE, BUT ARE NOT LIMITED TO, USING AFTER-MARKET LED BULBS AND MODIFICATION OF THE CIRCUITRY, WHICH ARE PRESUMED TO BE DAMAGES RESULTING FROM MISUSE OR ABUSE.

DISCLAIMER OF CONSEQUENTIAL AND INCIDENTAL DAMAGES:

You and any other user of Maxspect (HongKong) Limited products shall not be entitled to any consequential or incidental damages, including without limitation, loss of use of the unit, inconvenience, damage to personal property, phone calls, lost income or earnings. This warranty gives you specific legal rights and you may have other rights, which vary from state to state.

MAXSPECT LTD. MAKES NO WARRANTY OR REPRESENTATION, EITHER EXPRESS OR IMPLIED, WITH RESPECT TO THE PRODUCT'S QUALITY, PERFORMANCE, MERCHANTABILITY, OR FITNESS FOR A PARTICULAR PURPOSE. AS A RESULT, THIS PRODUCT, IS SOLD "AS IS," AND YOU THE PURCHASER ASSUME THE ENTIRE RISK AS TO ITS QUALITY AND PERFORMANCE.

IN NO EVENT WILL MAXSPECT LTD, BE LIABLE FOR DIRECT, INDIRECT, SPECIAL, INCIDENTAL, OR CONSEQUENTIAL DAMAGES RESULTING FROM ANY DEFECT IN THE PRODUCT OR ITS DOCUMENTATION.

The warranty, disclaimer, and remedies set forth above are exclusive and replace all others, oral or written, expressed or implied. At no time will any Maxspect (HongKong) Limited dealers, agents, or employees be authorized to make any modifications, extension, or addition to this warranty.

Some states do not allow the exclusion or limitation of implied warranties or liability for incidental or consequential damages, so the above limitation or exclusion may not apply to you.

Note: For the latest specifications of the product, please visit website www.maxspect.com, or scan below QR-Code.





Maxspect™ Jump Series Protein Skimmer Owner's Manual Version 1.0

NOTE: Products, packaging, features and specifications are subject to change without notice.

All screen images are simulated.

© 2009-2020 Maxspect Limited. Reproduction in whole or in part without written permission is prohibited.

All rights reserved. Maxspect is trademark of Maxspect Limited.

www.maxspect.com